



Chair in Finance

Job reference: 840
Closing date: 28 October 2013

The University

The University of Birmingham is a thriving and progressive institution that combines over a century of heritage with one of the most compelling and ambitious agendas in higher education. Ranked amongst the world's top 100 institutions and a member of the prestigious Russell Group of leading research institutions, the University is well placed to succeed in the increasingly competitive global higher education sector. We have a clear vision for the future, ambitious leadership, world-leading academic strength, and a secure financial base.

Our five-year strategic plan 'Shaping Our Future: Birmingham 2015' was published in 2010 and the University is already demonstrating significant progress against this plan that will lift us into the international elite. In 2011/12, new research grant awards increased by over 56% to £145 million; we recruited an undergraduate cohort with the finest academic credentials in our history; opened a new representative office in Guangzhou, China; and developed a £175m investment plan for our other major asset, the University's green and leafy parkland campus in Edgbaston, Birmingham.

Inevitably, these are just a few of our achievements from the past 12 months, as the University community works together to enhance further our research achievements and educational provision. We are long established as leaders in the field of Medicine, with strengths in the research and treatment of cancer, heart, and liver disease as well as infections with a global significance including TB. In the Physical Sciences we boast outstanding academic and research credentials, including Chemical Engineering where we were recognised with a Queen's Anniversary Prize in the Jubilee year. In 2011 and 2012 we pioneered the Birmingham Fellows campaign, resulting in the appointment of an elite group of 66 early career international academic researchers to the institution.

Birmingham has been challenging and developing great minds for more than a century. The University continues this tradition today and is delighted that its plans to establish a University School and Sixth Form have recently been approved by the Department for Education. It will provide an excellent academic education for Birmingham's young people and to serve as a centre of teacher education in the region as it will be one of the first "University Training Schools" in the country.

The University of Birmingham School and Sixth Form will be a comprehensive co-educational 11-16 school plus a sixth form, taking 150 per year into Year 7 and up to 200 per year into the Sixth Form. It will be located near the University of Birmingham's Edgbaston campus. It will have strong links with the University and reflect its values, including a commitment to academic excellence and to raising aspirations and widening participation in higher education. As such, the emphasis will be on preparing pupils for entrance to selective universities. Our goal is to accept the first intakes into Years 7 and 12 (sixth form) for September 2015.



Chair in Finance

The University's cultural profile has been enhanced this year with the opening of the beautiful Bramall Music Building, which houses the Elgar Concert Hall, named after our first Professor of Music, Sir Edward Elgar. This outstanding venue reflects the quality of our Music department, ranked second in the UK, and the importance of music as a part of the social and cultural life of the institution.

The Bramall Music Building is one amongst a number of cultural assets that include the Shakespeare Institute located in the heart of Shakespeare's Stratford-upon-Avon, the Ironbridge Institute at the centre of this world heritage location in Shropshire, and the Barber Institute of Fine Arts, a small art gallery with a European reputation, located on campus. Our Edgbaston campus also includes Winterbourne House and Garden, a unique Edwardian heritage attraction that is home to over 6,000 plant species from around the world.

Sport is also integral to life at Birmingham and we are ranked second in the UK for the quality of student sport. We have capital plans for a major new sports development, which will include the city of Birmingham's first 50m swimming pool that will not only provide facilities for our performance sportsmen and women but also offer a new resource to the local community. It was perhaps this combination of performance in, and commitment to, sport that attracted the fastest man in the world, Usain Bolt and the 2012 Jamaican track and field team to our campus for their pre-Olympic training camp. After winning his second gold medal at the Games, Usain Bolt and his colleague Yohan Blake saluted, to a worldwide television audience, the facilities, support and warm welcome that he and his team mates had received from the University.

This recognition supports the University's long-term plans to extend its international profile. In addition to the China office, which opened in 2011; the University also operates offices in India and Brussels. Through these offices, we are developing research partnerships with institutions around the world. In Brazil, the Universities of Birmingham and Nottingham are working together in a unique collaboration to develop a network of strategic partnerships with Brazilian universities, as well as the oil and gas industry. These initiatives have been central to the UK Government's outreach into Brazil, and this year will bring in the region of 20 doctoral researchers to the University as part of a prestigious scholarship programme.

We receive over 80,000 applications each year from students wishing to study here and welcome 28,000 successful students to the campus from 150 countries. A £5m investment in employability services has seen the numbers of graduates who find work within the first six months of graduation increase significantly for the second year in a row, and in a time of recession. A long-term project improving the academic support available to students and plans for the development of a state-of-the-art student services hub have led to satisfaction rankings in the National Student Survey rising faster than the national average, with overall satisfaction now standing at 88% (which is 3% higher than the sector average).

Not only does Birmingham have serious ambition but we also have financial resources to realise those ambitions, and our plans for the future are underpinned by long established financial probity. We are a large scale business, worth over £1 billion to our region and are currently forecasting a turnover of £480 million for the financial year 2012/13. Our cash surpluses are re-invested into the academic and capital fabric of the institution, enabling us to plan with confidence for the future and to continue to invest in the facilities and services that are required for high-quality research, and an outstanding student learning experience.

Led by Vice-Chancellor Professor David Eastwood, the University is structured for swift decision making, enabling us to capitalise on our academic range, financial strength and opportunities that emerge in the fast changing global HE environment.

The city of Birmingham

Birmingham is a major European centre and the second city of the United Kingdom. It is a city of business and ballet, canals and world-class concerts, jewellery and jazz, historical interest and cosmopolitan atmosphere. Birmingham is also the ideal base for exploring one of Britain's most fascinating regions for tourism, being within an hour's drive of Stratford-upon-Avon, Warwick, the Potteries, and the Cotswolds.



Chair in Finance

The new heart of Birmingham is symbolised by Symphony Hall, considered one of the greatest concert venues in the world and a fitting home for the globally respected City of Birmingham Symphony Orchestra (CBSO). Symphony Hall forms part of the impressive International Convention Centre, which overlooks attractive canals at the hub of the UK's canal network. At the magnificent Hippodrome Theatre is the internationally renowned Birmingham Royal Ballet, adding further cultural depth to the city. Apart from London's West End, Birmingham boasts the highest concentration of live theatre in the UK, including regular tours by major opera companies.

The City Museum and Art Gallery houses the world's finest collection of Pre-Raphaelite paintings, alongside a major collection of Old Masters, Modern and Contemporary pictures. The Barber Institute of Fine Arts (based on our own campus) houses one of the best UK university collections of Impressionist and Renaissance art. The restored Gas Hall Gallery has international touring exhibitions, while the Halcyon and Ikon galleries feature innovative contemporary works. National landmark sites abound, including the National Indoor Arena, the National Exhibition Centre, National Motorcycle Museum, National Car Heritage Museum, and the National Sealife Centre.

The iconic Bullring is one of the largest dedicated shopping facilities in Europe. Sports and recreation are also well served; the city offers international Test cricket, top-flight football, International Championship golf and top-class rugby. The International Convention Centre and National Indoor Arena have spawned a whole new development at the centre of the city. The National Exhibition Centre, on the outskirts of the city, remains one of the largest exhibition facilities in Europe.

Birmingham is at the crossroads of the UK's motorways. From Birmingham International Airport, more than a dozen different airlines operate scheduled services to 60 destinations worldwide. The University is the only mainland UK university to have its own railway station, while 50 million passengers a year use Birmingham New Street Station, which will be at the centre of the proposed high speed rail network. London is 90 minutes away by shuttle service, with trains every 20 minutes until the evening. There is a high standard of all types of private accommodation, with high-quality affordable family housing in several attractive residential suburbs. Public parks and large domestic gardens are an integral part of this green city. Quality public and private schools are widely available, with several consistently rated in the top 10 on examination performance in annual league tables for England and Wales.

College of Social Sciences

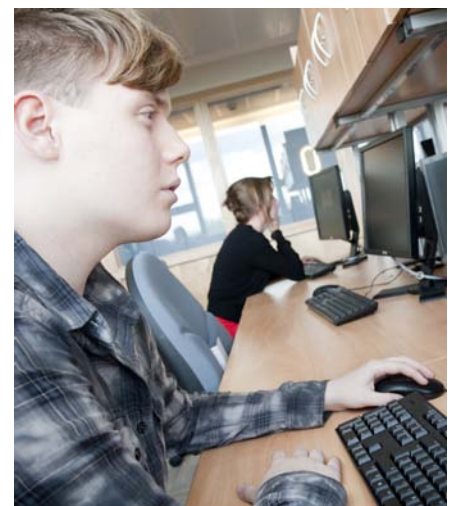
The College of Social Sciences consists of four Schools: Birmingham Business School; School of Education; School of Government and Society; and the School of Social Policy.

The College brings together over 360 academics (including 68 professors) and around 215 administrative staff across a range of disciplinary and interdisciplinary fields.

The College provides:

- Access to research partnerships, expertise and research capacity, generating considerable research investment and ensuring all our activities are relevant to the current world of practice
- A diverse range of successful taught undergraduate and postgraduate courses
- A range of postgraduate research and doctoral opportunities
- Knowledge transfer into business, government, and society
- Continuing professional and management development programmes
- An ESRC approved Doctoral Training Centre

Across the four schools we teach more than 8033 students (this equates to around a third of the total number of students studying at Birmingham). Some of our students are registered at the University for four years while others are here for only a few months and around 20% of our student body is international. The schools are encouraged to work in an interdisciplinary nature and have been proactive in initiating numerous cross-school and university wide projects on a range of cutting edge research areas. Our annual income is in the region of £80m per annum.



Chair in Finance

The School of Social Policy is an integral part of the College of Social Sciences. The College is overseen by a College Board which comprises the Head of College, the four Heads of School, College Directors of Education and Research and Knowledge Transfer and the College Head of Operations. It is also attended by the College Business Partners in HR, Planning and Finance. It has a well developed infrastructure including teams of specialists in: research applications; HR; communications and marketing; alumni relations; e-learning; web enabling; and IT. Much of this specialist support is aligned to schools. Within the strategic framework set by the University, the College has considerable autonomy in pursuing its academic ambitions. In turn, much of this autonomy is passed onto schools.

The College is fully supportive of the University's five year strategy: 'Shaping our Future: Birmingham 2015'. At the heart of this strategy are five mutually supportive goals: enhancing research power; providing students with a distinctive, high-quality experience; sustaining our financial strength; enhancing our performance as an engaged University; and becoming the destination of choice amongst our peers. Further details of this strategy can be downloaded here www.birmingham.ac.uk/university/about/2015.aspx

For more details about the College of Social Sciences visit:

Birmingham Business School

Birmingham Business School (BBS) has been a major player in business education for more than a century, but we are not complacent. We are already investing significantly in our academic staff and facilities to help us reach our ambition of being a top ten UK and internationally recognised Business School.

Birmingham offered the first business degree in England when students were recruited in 1902, and postgraduate programmes soon followed in 1905. Today, staff supervise and teach c150 doctoral students, c160 undergraduate students and c1200 postgraduate taught students across a wide range of business and economic disciplines.

The School enjoys an international reputation with over 120 lecturing and research staff with wide-ranging specialisms who, together with an international Advisory Board (chaired by Lord Digby Jones) ensure we continually draw upon the input and expertise of high profile external stakeholders.

In its current form, Birmingham Business School was created in 1989, with the Department of Economics joining in 2008 as part of the creation of the College of Social Sciences. The School is accredited by AMBA and EQUIS and currently seeking accreditation by AACSB. The School already has strong links with a number of international institutions including the Singapore Institute of Management (SIM) and Hong Kong School of Professional Education and Executive Development and is working in close collaboration with the University's new Guangzhou Centre - a unique facility established in co-ordination with the Guangzhou municipality to facilitate joint research and education initiatives in Guangzhou and the wider region.

The School is currently recruiting a number of new Chair positions and further appointments to our senior academic team are in progress. A contemporary edge is provided in our main site at University House – a purpose built building situated in its own extensively landscaped grounds on the edge of the main University of Birmingham Edgbaston campus. The School is about to expand into adjoining buildings providing further purpose built lecture space and office accommodation for our staff and students.

Crucially, the School is embedded within one of the UK's leading universities, constantly in the world's top 100, which offers opportunities for extensive and exciting research and teaching collaborations; for example, across science and engineering, medicine and public policy and management.

The School continues to receive increasing levels of demand for its undergraduate and taught master's programmes, and our suite of MBA programmes continues to rise in the international rankings. The Financial Times positioned the School's MBA at 68th in the world, 20th in Europe



Chair in Finance

and 11th in the UK. Similarly, The Economist recently ranked the School's MBA 9th in the UK (70th worldwide) helping secure Birmingham Business School as one of the top 10 UK Business Schools. Expansion also rank the School 54th in their global MBA rankings (only 8 other UK Schools made their ranking criteria).

For more details about the School including a virtual tour of University House visit www.birmingham.ac.uk/business

Department of Accounting and Finance

The Department of Accounting and Finance has a history of academic excellence in both research and teaching that places it at the forefront of knowledge creation and dissemination in its fields. Having appointed the country's first Accounting professor as far back as 1902 we can now boast nine professors amongst our 23 academic staff. The department offers a BSc degree in Accounting and Finance which offers exemptions from all of the major accounting professional bodies, two MScs in International Accounting and Finance and in Investments and a range of research degrees. A major new undergraduate programme is being launched in 2012 in partnership with KPMG and ICAS to offer a ground breaking link between a University education and professional employment. Research areas of expertise include corporate finance, corporate governance, financial accounting, management accounting, information systems and taxation.

Job outline

- Duration of post – Full-time, permanent
- Post is open to – internal/external candidates
- Grade – 10
- Salary – Competitive package for an outstanding candidate
- Informal Enquiries – please contact Professor Ranko Jelic (0121 414 5990; r.jelic@bham.ac.uk)

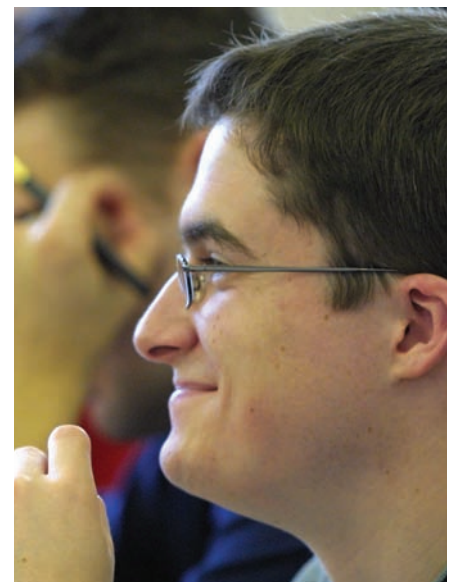
The appointment

Strategic development of the finance discipline is an important part of the long term plans of developing both finance teaching and research as core topic areas at the Birmingham Business School. The successful applicant will have strong teaching, leadership and research qualities to have an important impact on the development of the Department of Accounting and Finance.

The successful applicant will be able to provide leadership, in the area of finance, from both research and teaching perspectives. The role requires a willingness and ability to lead research projects, funding applications and to advise and mentor those less experienced colleagues in the research process. The role also requires a willingness and ability to promote the development and teaching of finance programmes by experience and example.

Person specification

- A PhD in a related field and/or professional qualification(s)
- An established track record as an experienced and innovative educational leader in the finance area
- Experience of undergraduate and postgraduate teaching and administration at different levels (potentially including executive/CPD)
- A reputation for excellence in scholarship, and suitable research, in the field
- An established record of working with senior executives in external agencies in the context of research or educational provision in finance
- Excellent presentation skills
- A collegial attitude which will include experience of and a commitment to working with, and mentoring / leading other staff in an educational and research environment
- An ability to work across institutional and disciplinary boundaries.



Chair in Finance

Main responsibilities

- To make major contributions to the theoretical and/or methodological debates of the finance discipline through rigorous scholarship and/or original research
- To publish the outcomes of this scholarship in leading research and professional journals and books which further develop the University's reputation in the subject area
- To provide leadership in securing research funding in the area of finance and in securing publications in highly ranked journals, both individually and through guidance to colleagues
- To contribute to debates on the development of finance beyond the University, and at the interface of the University, commerce, the profession and related organisations
- To provide leadership in the development and management of existing and new programmes to promote learning and teaching in the subject area
- To ensure that teaching activity in the subject area achieves the educational standards of the School and University
- To participate in undergraduate and postgraduate teaching. Part of this workload may involve teaching on the School's offshore programmes in Singapore, Hong Kong and Guangzhou
- To supervise and examine dissertations at postgraduate level
- To design and deliver executive education for a range of public and private sector participants focused on finance
- To develop and/or sustain key external partnerships which underpin the development and delivery of programmes offered by the Department, and broader teaching and research collaborations
- To take full part in the Schools' overall research and teaching activities and to contribute to those of other schools and departments where beneficial
- To undertake a leading administrative role, as identified by the Head of Department
- To contribute to the development of academic leadership within the University, where appropriate
- To contribute to the determination of the academic standards framework throughout the University
- To take an active part in the life of the departments and schools, including participation in departmental seminars and attending of departmental meetings as required
- To promote and market the work of the departments and the schools in the subject area both nationally and internationally.

How to apply

Applicants are invited to submit their application online to us, via www.hr.bham.ac.uk/jobs
Interviews for this post are currently scheduled to take place on 3 December 2013.

